

Designation

Gear pumps 3-RO

Output 30 ... 60 l/min at 1500 rpm

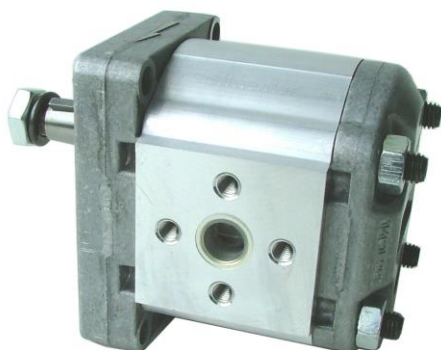
Type

FT 01 000 0xx

FIEDLER gear pumps guarantee extremely high and constant operating performance due both to the special system of balancing of the hydraulic loads on the bearings and to the high degree of accuracy of their working and the accurate choice of materials used.

Take the following items into consideration for selection of the FIEDLER gear pumps

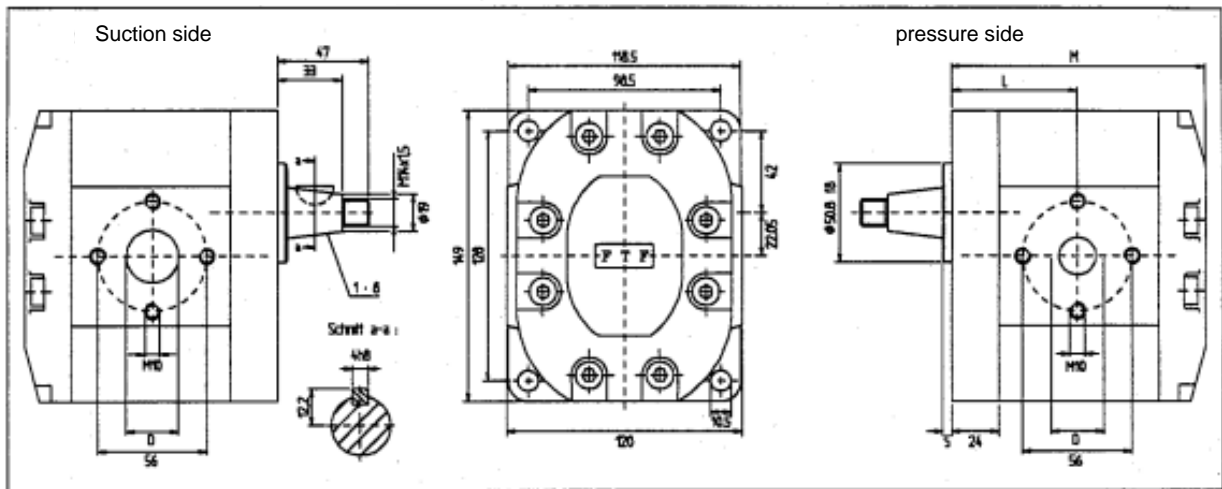
- *Drive pump only in indicated direction of rotation*
 - *Axial or radial loads are not allowed on the shaft. The coupling should be sized to absorb the peak horsepower developed*
 - *For the first start the pump must work 1 ... 2 minutes without load. After the pump can work with max. load.*
 - *The ambient fluid temperature is +80°C*
 - *The filter fineness in the system should be 25µm or better. (for high pressure pumps type RO use filters with 10µm fineness)*
- gear pumps with high operating performance
 - mounting position is free
 - industrial pressure 260 bar
 - accurate work and accurate choice of the used material



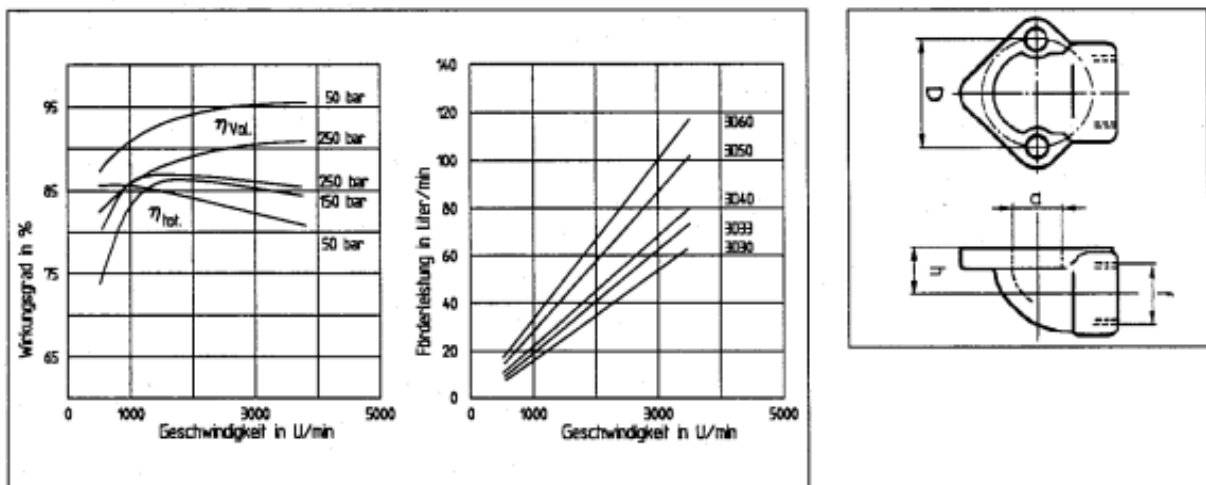
Technical data

- pressure in suction
-0,3 ... 2 bar
- fluid temperature
-10°C ... +80°C
(optionally -40°C ... +80°C)
- viscosity 6 ... 500 cSt
- filtration 10µm
- noise < 80 dB (A)

Dimensions



Characteristic curves



Measure and other relevant informations

TYPE	output		max. operating pressure	max. peak pressure	Speed max rpm	dimensions			order code
	cm ³ /r	l/min 1500rpm				L	M	d	
3D30RO	20	29	280	295	3500	64	127	27	01 000 013
3D33RO	22	31	280	295	3500	64,5	128	27	01 000 014
3D40RO	26	37	280	295	3000	66	131	27	01 000 015
3D50RO	33	48	270	285	3000	68,5	136	27	01 000 016
3D60RO	39	56	260	275	3000	70,5	140	27	01 000 017