

Hand pump FT 01 0000 30

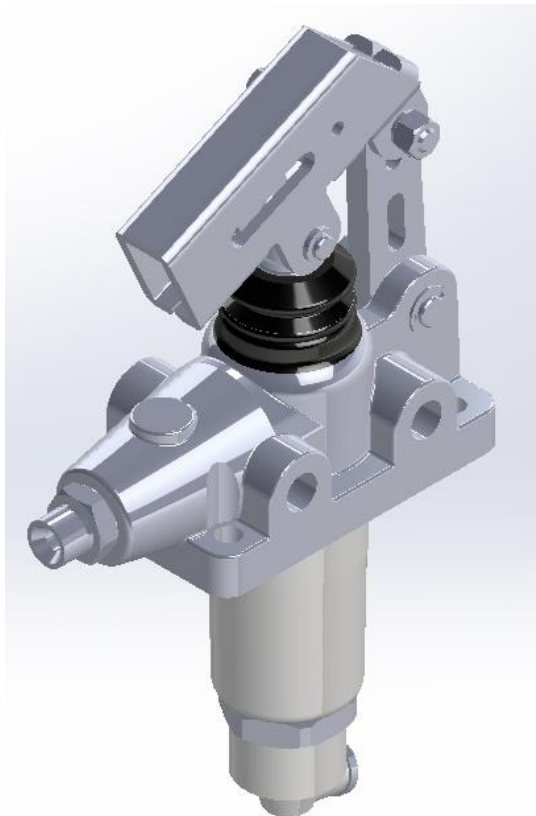
double-acting function - up to 250 bar

The FIEDLER - handpump FT01000030 is double acting and is designed for high standards.

With each motion the same amount of oil is promoted the pressure line. This results in a more economical use. In addition, in each case a check valve is integrated on both the pressure side and on the suction side. Thus a constant pressure in the hydraulic working circuit is guaranteed or prevented from running dry in rest position.

Your application will find hand pumps in aggregates as emergency pump, for the actuation of hydraulic lifting cylinders, winches, motors, etc ...

The existing cast pump housing is designed for starting or mounting on machine or aggregates. The piston rod is hard chrome plated and guarantees a long lifetime.



- *double-acting*
- built-in check valve for pressure and suction sides
- $P (max.) = 250bar$
- Cost-effective
- long lifetime

Technical specifications: FT 01 0000 30

design type:
 double-acting hand pump

operating pressure:
 max. 250 bar

Volume per stroke:
 24,5 cm³ / stroke

Weight:
 2,4 kg

Hydraulic fluid:
 Mineral oils to DIN 51524
 and DIN 51525

Biodegradable
 Hydraulic fluids
 and others on request

Temperature range:
 -15 ... + 100 ° C

viscosity range at 50 ° C:
 10.5 ... 38cSt

Mounting position:
 on the tank container

