

Handpumpe FT 01 000 02X

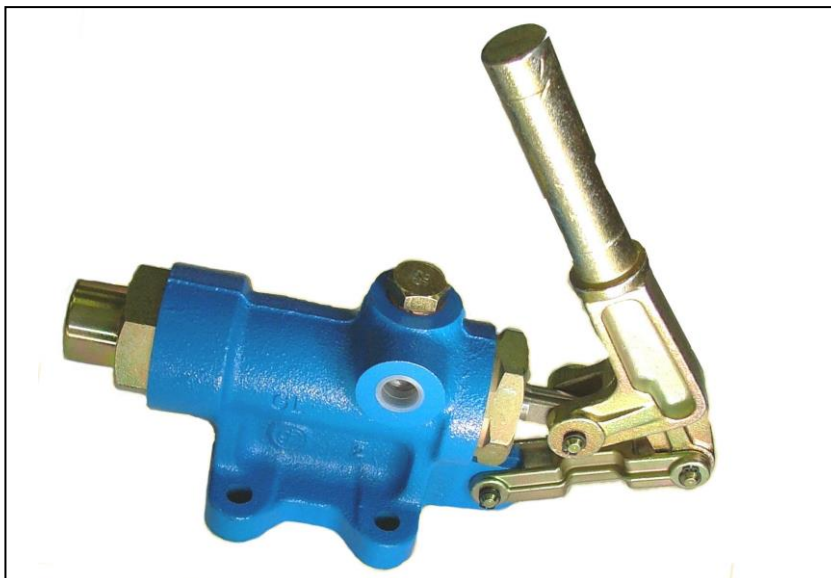
double-acting function - up to 460 bar

The FIEDLER - handpump FT0100002X is double acting and is designed for high standards.

With each motion the same amount of oil is promoted the pressure line. This results in a more economical use. In addition, in each case a check valve is integrated on both the pressure side and on the suction side. Thus a constant pressure in the hydraulic working circuit is guaranteed or prevented from running dry in rest position.

Your application will find hand pumps in aggregates as emergency pump, for the actuation of hydraulic lifting cylinders, winches, motors, etc ...

The existing cast pump housing is designed for starting or mounting on machine or aggregates. The piston rod is hard chrome plated and guarantees a long lifetime.



- double acting
- built-in check valve for pressure and suction side
- $P \text{ (max.)} = 460 \text{ bar}$
- economical use
- long service life

Technical specifications:

design type:

double-acting hand pump

operating pressure:

Depending on type, max. 460 bar

Volume per stroke:

Depending on type, from
18-111 cm³ / stroke

Weight:

4,5 kg

Hydraulic fluid:

Mineral oils to DIN 51524
and DIN 51525

Biodegradable
Hydraulic fluids
and others on request

Temperature range:

-15 ... + 100 ° C

viscosity range at 50 ° C:

10.5 ... 38cSt

Mounting position:

on the tank container

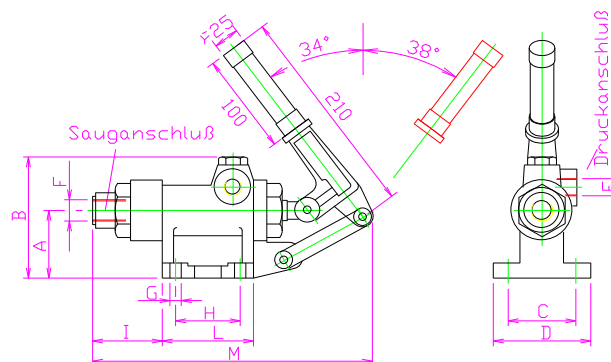
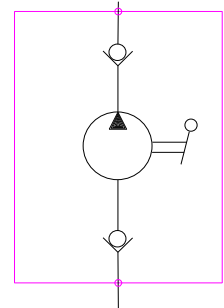
*) Preferred type, e.g.
for standard units
up to 250 bar

Ordering information:

Typ: FT01 000 02X

Typ	Fördermenge in cm ³ /Hub	Druck in bar
01000020	18	460
01000021	29	320
01000022	36	250
01000023	42	220
01000024	57	160
01000025	87	120
01000026	111	90

*)



Typ	A	B	C	D	E	F	G	H	I	J	K	L	M
01000020	45	70	80	80	83	115	115	30	80	80	80	80	100
01000021	45	70	80	80	83	115	115	30	80	80	80	80	100
01000022	45	70	80	80	83	115	115	30	80	80	80	80	100
01000023	45	70	80	80	83	115	115	30	80	80	80	80	100
01000024	45	70	80	80	83	115	115	30	80	80	80	80	100
01000025	45	70	80	80	83	115	115	30	80	80	80	80	100
01000026	45	70	80	80	83	115	115	30	80	80	80	80	100

